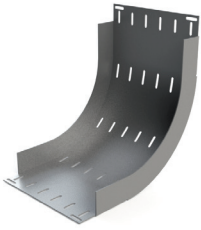
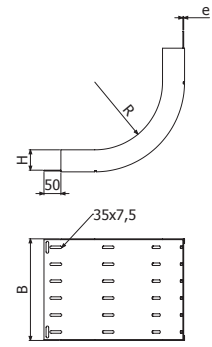




CCU-200 E2,5

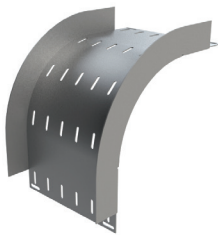


	B		H		e		R		AL	
	mm	inch	mm	inch	mm	mm	inch	REF.	kg/ud	
CCU 100x30x2,5	100	4"	30	1 1/6"	2,5	200	8"	2/9914	0,74	
CCU 200x30x2,5	200	8"	30	1 1/6"	2,5	200	8"	2/9915	1,20	
CCU 300x30x2,5	300	12"	30	1 1/6"	2,5	200	8"	2/9916	1,66	
CCU 400x30x2,5	400	16"	30	1 1/6"	2,5	200	8"	2/9917	2,13	
CCU 600x30x2,5	600	24"	30	1 1/6"	2,5	200	8"	2/9918	3,05	
CCU 50x60x2,5	50	2"	60	2 3/8"	2,5	200	8"	2/9919	0,74	
CCU 100x60x2,5	100	4"	60	2 3/8"	2,5	200	8"	2/9920	0,96	
CCU 200x60x2,5	200	8"	60	2 3/8"	2,5	200	8"	2/9921	1,42	
CCU 300x60x2,5	300	12"	60	2 3/8"	2,5	200	8"	2/9922	1,88	
CCU 400x60x2,5	400	16"	60	2 3/8"	2,5	200	8"	2/9923	2,34	
CCU 600x60x2,5	600	24"	60	2 3/8"	2,5	200	8"	2/9924	3,27	

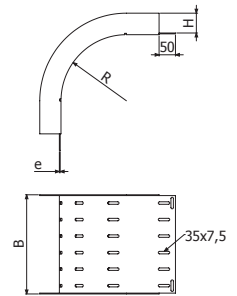


4/100 x B1 (2/4925-i304)

CXU-200 E2,5

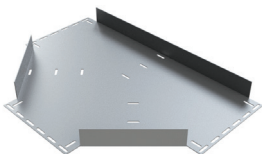


	B		H		e		R		AL	
	mm	inch	mm	inch	mm	mm	inch	REF.	kg/ud	
CXU 100x30x2,5	100	4"	30	1 1/6"	2,5	200	8"	2/9925	0,66	
CXU 200x30x2,5	200	8"	30	1 1/6"	2,5	200	8"	2/9926	1,06	
CXU 300x30x2,5	300	12"	30	1 1/6"	2,5	200	8"	2/9927	1,46	
CXU 400x30x2,5	400	16"	30	1 1/6"	2,5	200	8"	2/9928	1,87	
CXU 600x30x2,5	600	24"	30	1 1/6"	2,5	200	8"	2/9929	2,67	
CXU 50x60x2,5	50	2"	60	2 3/8"	2,5	200	8"	2/9930	0,70	
CXU 100x60x2,5	100	4"	60	2 3/8"	2,5	200	8"	2/9931	0,90	
CXU 200x60x2,5	200	8"	60	2 3/8"	2,5	200	8"	2/9932	1,30	
CXU 300x60x2,5	300	12"	60	2 3/8"	2,5	200	8"	2/9933	1,70	
CXU 400x60x2,5	400	16"	60	2 3/8"	2,5	200	8"	2/9934	2,11	
CXU 600x60x2,5	600	24"	60	2 3/8"	2,5	200	8"	2/9935	2,91	

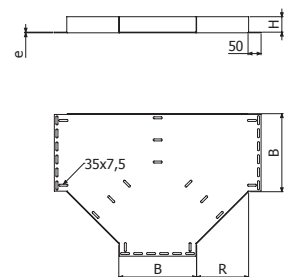


4/100 x B1 (2/4925-i304)

TEU-200 E2,5



	B		H		e		R		AL	
	mm	inch	mm	inch	mm	mm	inch	REF.	kg/ud	
TEU 100x30x2,5	100	4"	30	1 1/6"	2,5	200	8"	2/9936	1,02	
TEU 200x30x2,5	200	8"	30	1 1/6"	2,5	200	8"	2/9937	1,73	
TEU 300x30x2,5	300	12"	30	1 1/6"	2,5	200	8"	2/9938	2,57	
TEU 400x30x2,5	400	16"	30	1 1/6"	2,5	200	8"	2/9939	3,55	
TEU 600x30x2,5	600	24"	30	1 1/6"	2,5	200	8"	2/9940	5,91	
TEU 50x60x2,5	50	2"	60	2 3/8"	2,5	200	8"	2/9941	0,92	
TEU 100x60x2,5	100	4"	60	2 3/8"	2,5	200	8"	2/9942	1,23	
TEU 200x60x2,5	200	8"	60	2 3/8"	2,5	200	8"	2/9943	1,96	
TEU 300x60x2,5	300	12"	60	2 3/8"	2,5	200	8"	2/9944	2,82	
TEU 400x60x2,5	400	16"	60	2 3/8"	2,5	200	8"	2/9945	3,83	
TEU 600x60x2,5	600	24"	60	2 3/8"	2,5	200	8"	2/9946	6,23	



4/100 x B1 (2/4925-i304)